

**INSTALLATION INSTRUCTIONS: Stainless Steel Passenger Tumble
Front Seat Bracket #4772**

CONTENTS:

- | | |
|---|-------------------------------------|
| (1) Stainless Passenger Tumble
Front Seat Bracket Assembly | (8) 5/16 SAE FLAT WASHER (SMALL) |
| (4) 5/16-18 X 1 NC PLTD HEX BOLT (LONG) | (10) 5/16 X 7/8 FLAT WASHER (LARGE) |
| (4) 5/16-18 X .75 NC PLTD HEX BOLT (SHORT) | (1) SEAT BRACKET SHIM |
| (5) 5/16-18 X 1.25 NC PLTD HEX BOLT (OPTIONAL) | (2) SEAT BRACKET SPACERS |
| (13) 5/16-18 PLTD NYLOC | |

TOOLS NEEDED:

1/2" Ratchet Wrench or Socket

ADDITIONAL PARTS NEEDED:

Factory style driver side seat slider rails, available at duffuff.com - #4771

IMPORTANT: READ ALL BEFORE STARTING. Use **EXTREME** caution when opening the bracket with no load on the device reaching from the front or side can result in serious injury! These parts are tig welded with stainless filler rod, pre assembled and made from high quality electroplated stainless steel. They are designed to last for a lifetime rust free. They can be painted, or left as shipped. It is completely up to you. The install hardware is plated grade 5 mild steel to prevent any thread galling or corrosion.

These instructions will detail the installation procedure of the Stainless Steel Tumble Front Seat Bracket. This Seat Bracket is designed to allow you to place an aftermarket seat (Bestop or similar) . passenger location utilizing a factor driver side seat slider and gain quick and easy rear seat passenger access. This part will also work with a factory passenger seat with some minor modifications as well as other brands of aftermarket seats that use the C13 PRP universal seat slider kit.

1) Safety First: Make sure the vehicle is on flat ground, the parking brake is set and wheels are chocked. Disconnect the negative (-) battery cable.

3) Remove the bracket from the box and packaging and inspect. The gas spring has a lot of pressure to lift the seat with ease. It can cause injury if your hands are in the wrong place when you release the seat bracket. Be very careful in doing so. Compress the seat bracket down, reach in from the backside of the seat bracket & pull the knob. Then allow the seat bracket to open up making sure your fingers and hands are out of any pinch or shearing areas of the seat bracket. Set aside the seat bracket after inspection of any defects.

4) Carefully remove your existing passenger seat. It is paramount that the original bolt locations are present and working. If you have a broken bolt etc. it will need to be removed/repared for this bracket to work. It is designed to bolt in, with no modification necessary to the Bronco. Installation using any other seat besides a Bestop TrailMax seat may require some slight modification to the seat bracket to accept the factory seat slider rails. You will also need to remove the footman loop as well. There are also another set of holes in the upper portion of the bracket for PRP universal seat slider kit C13. Using the PRP slider kit may need a couple of SMALL 5/16" washers (included in our hardware kit) per stud to allow the slider to clear the seat



865.938.6696 www.duffuff.com
6609 Bronco Ln.
Knoxville, TN 37921
1/1 9/25

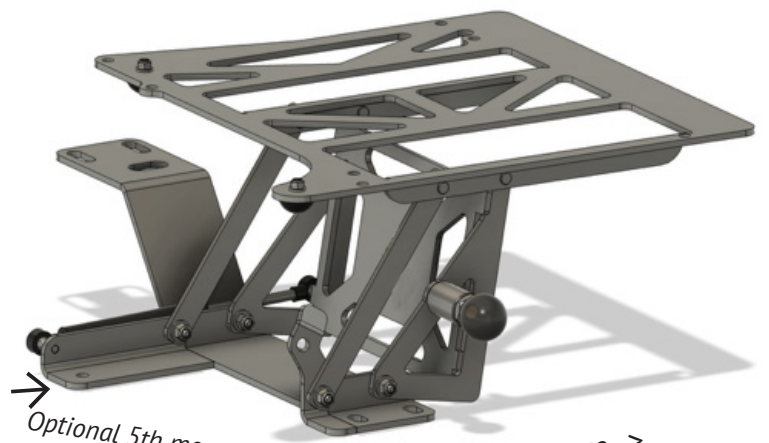
For technical assistance please visit duffuff.com/tech to submit a tech request.

Figure 1



Front of Bronco

Figure 2



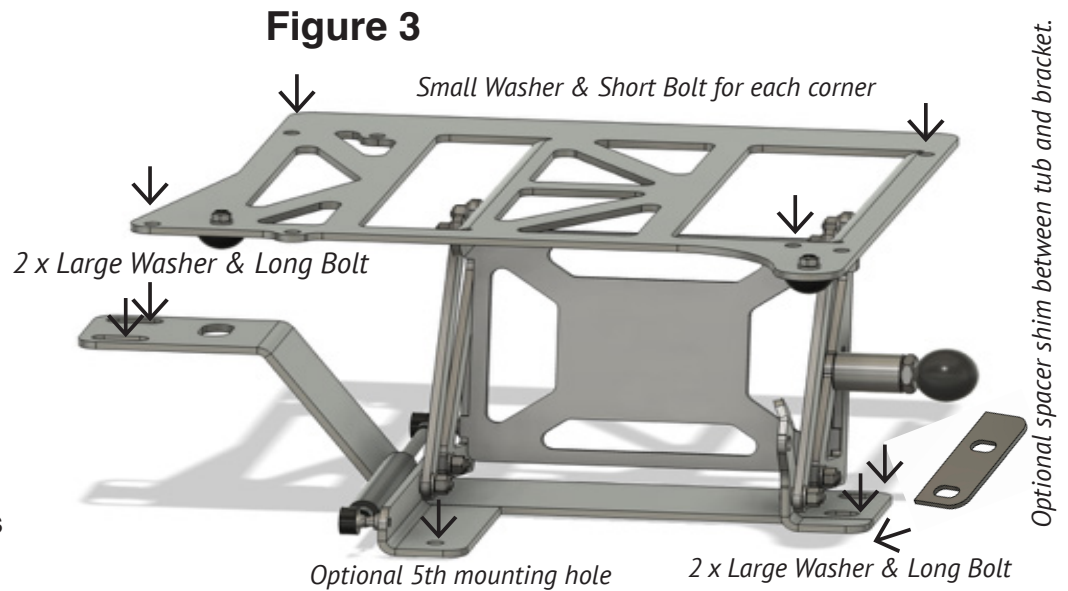
To Front of Bronco ->

bracket while sliding. This will allow the use of many different aftermarket & off-road seat options.

5) Using factory style driver side seat sliders (part# 4771 not included), fit the slider to your passenger seat bottom. They will bolt right up to the Bestop seats and if you are using a factory passenger seat, it will work but you will have to remove some of the stand offs to gain access to the OEM mounting locations. We also provide two seat bracket spacers to clear obstacles around some seats & seat sliders.

6) With the slider mounted to the seat and adjusted per the slider manufacturer's instructions, you are ready to test fit the tumble bracket. It utilizes the 4 mounting holes that the OE factory seat mounted to. You are just checking for clearance and alignment. If you have an unusual amount of padding etc. you may need to clearance the mounting holes some to account for extra thickness. These were designed and tested with a bare floor as well as a carpeted floor with insulation. If you have a floor covering thick-

ness greater than 0.75" you may need to clearance the mounting holes just a bit and the supplied mounting bolts may be too short. You can use the optional longer 5/16" bolts. We don't provide stainless mounting hardware as it tends to gall and get stuck in the threads. Feel free to upgrade the mounting hardware if you prefer. At this time, install the long 5/16" hex bolts and large washers in the seat bracket and mount it to the floor. See **Figure 3** for the Hardware installation. There is also a 5th optional mounting hole. With a non-carpeted vehicle there can be a rocking motion for the bracket on the floor using the 4 factory bolts. This optional 5th bolt will stop this from happening. To use this hole a hole will need to be drilled in your Broncos floor. Some tubs are sloped which can cause the bracket to lean down on the pass side. If that is the case with your tub, we supply a 1/8" seat bracket shim shown in **Figure 3** to slide in between the tub and seat bracket. For your tub you may need two or three of these shims, we sell these seperately at dufftuff.com see #4772-01



7) With the mount location being inspected and confirmed, it is time to attach the seat bracket to your seat slider bottom. Do not do this step in the Bronco. Using the short 5/16 hex bolts and small washers, you will attach a bolt with a washer from the seat side down through the bracket followed by another washer and nyloc nut. Leave the bolts snug so that adjustments can be made before torquing to spec.

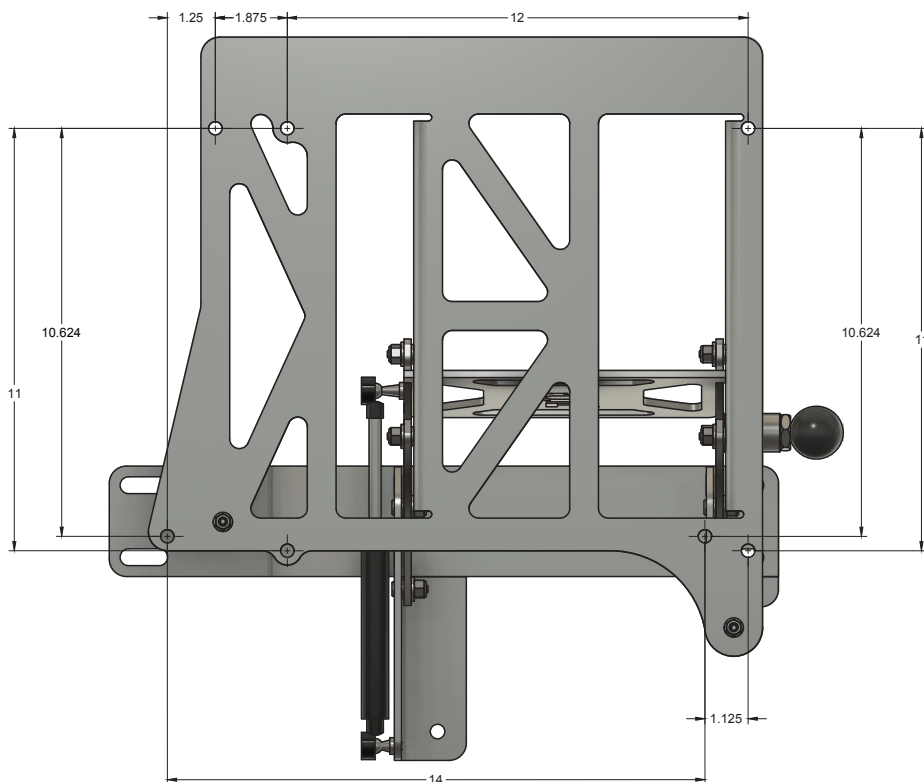
8) It is easiest at this point to compress the seat bracket until it latches to itself for installing into your Bronco. Once the base is latched closed, you can transfer the assembly into your Bronco and loosely install the hardware into the seat pan.

9) With everything installed it is time to start the adjustment of things. It is important to make sure the bracket is slid as close to the passenger door as possible then tighten the 4 mounting bolts. With the chair base firmly attached, you can now rotate or slide the seat slightly to have it square and then tighten the 2 bolts and nuts closest to the passenger door. Fold the seat as far forward as it will go and carefully release the seat bracket fold and tumble and allow the seat to rise into the up position. This will give you easier access to the remaining two nuts and bolts and tighten them up firmly.

10) Now the seat is fully adjusted and you can test the operation of the tumble feature. The seat bottom can be slid to whichever position is best for the passenger and does not need to be moved for the tumble operation, just the seat back needs to be laid forward. If you need more access room you

can slide the seat as far forward as it will go to gain more room if needed.

11) Reconnect your negative (-) battery cable, remove your wheel chocks and take your Bronco for a test drive and thoroughly work the seat functions and operations. Once the seat and seat bracket are dialed in, load the kids, dogs and gear easily behind your passenger front seat.



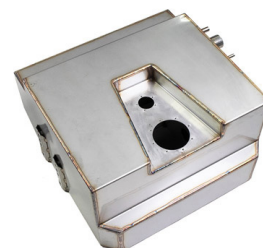
Additional Shim for Bracket #4772-01



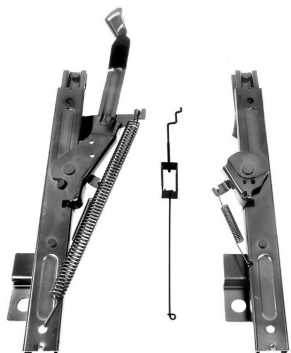
Additional Spacer for Seat Rails #4772-02



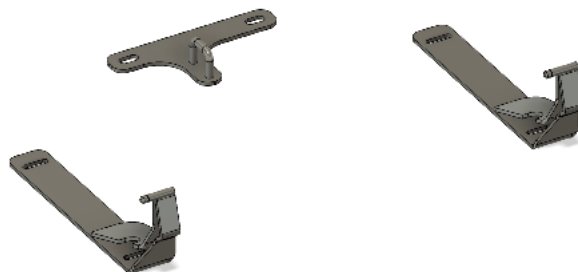
Stainless 20 Gallon Fuel Tank #4520



Early Bronco Slider Bracket #4771



LCR Rear Fold and Tumble Seat Bracket #4773



Early Bronco Modern Door Checks #4225 / 4226



3/3 10/25

LIMITED WARRANTY

James Duff Inc. warrants our products to the original purchaser to be free from defects in materials and workmanship. Warranty periods begin at the date of purchase and varies by product. Shocks have a limited lifetime warranty. Headers, Radiators and Suspension Products, Power Brake Boosters and Master Cylinders have a one year warranty. Adapters and soft goods such as upholstery, vinyl and rubber products have a 90 day warranty. All warranties are to the original purchaser with proof of purchase only. Such obligations under this warranty shall be limited to the repair or replacement, at JDI's discretion, of any assembly or part which upon examination by JDI proves to be defective. Any costs of removal, installation, re-installation or freight charges are expressly excluded from this warranty. This warranty covers only manufacturers defects, and does not cover product finish or damage resulting from abuse, misuse, negligence, racing, alteration, accident or damage in transit. All returns must be pre-authorized by JDI and accompanied with a Return Goods Authorization Number (RGA) and a dated proof of purchase. Returns must be made within 30 days of purchase, packaged sufficiently to prevent damage in shipment and sent prepaid to JDI, 6609 Bronco Lane, Knoxville, TN 37921. Returns without an RGA# will be refused. This warranty is expressly in lieu of all other warranties, expressed or implied, including the implied warranties of merchantability and fitness for use. This warranty gives you specific legal rights including other rights that vary from state to state. Some states do not allow limitations on how long an implied warranty lasts, or do not allow the exclusion of limitation of incidental or consequential damages, so the above limitations and/or exclusions may not apply to you.