

INSTALLATION INSTRUCTIONS: 5315

'66-'77 Bronco Hellwig Rear Sway Bar Quick Disconnect for Straight Links Only

2.5" - 4" suspension lift

CONTENTS:

- | | |
|--|--------------------------|
| 2 - Threaded QD Pins | Tools Required: |
| 1 - Main QD Mount Bracket (THICK) | Marker |
| 1 - QD Park Mount Bracket (THIN) | Drill or Impact Driver |
| 2 - 7/16-20 x 1 Grade 5 Bolt | Crescent Wrench |
| 6 - 7/16 SAE flat washers | Hammer |
| 1 - Lynch pin | Deep Well 3/8" Socket |
| 2 - 7/16-20 x 1.25" Grade 5 Bolt | 1/4" - 11/16" Socket Set |
| 2 - 7/16-20 U-nut Lock Nuts | Blue Loctite |
| 2 - 1/4 x 1-1/4 Self Tapping Hex Screws | |
| 2 - 1/4 SAE Flat Washers | |
| 1 - Plastic shim - (this is for when the park bracket is near the bump stop plate) | |



865.938.6696 www.dufftuff.com
6609 Bronco Ln.
Knoxville, TN 37921
08/22
1/2

INSTALLATION DIFFICULTY RATING: 3 out of 10

BEFORE STARTING PLEASE READ INSTRUCTIONS AND VERIFY ALL PARTS & HARDWARE ARE PRESENT. REFER TO PAGE 2 FOR VISUAL AID

IMPORTANT: YOU MUST HAVE STRAIGHT LINKS TO USE THIS KIT!

BEFORE YOU CAN CORRECTLY DO STEP 6, THE BRONCO MUST BE 100% COMPLETE WITH ALL GEAR AND FLUIDS AND THE SPRINGS MUST BE SETTLED TO THE HEIGHT THEY WILL STAY AT.

1. Completely install your rear Hellwig sway bar first following Hellwig's instructions. Leave your driver side end link disconnected at the sway bar **NOTE: This kit allows you to mount this product on the driver or passenger side. We suggest the driver side as it is closer and easier to get to when the driver is entering or exiting the vehicle.**

2. There are 3 holes on the end of the sway bar (the coin). Most commonly the middle hole is used when installing the sway bar end link to the coin. Determine which hole you want to use before installing the quick disconnect bracket to the coin. When using the quick disconnect bracket, you will not be able to directly mount the sway bar end link to the coin. You will want to install the QD bracket so the sway bar end link mounts directly in front of the mounting hole that you want to use and matches what mounting hole is used on the other end of the sway bar.

NOTE: If you have Duff rear long travel shock mounts you will mount the link at the frame, as shown in FIGURE B, on page 2.

3. Install the Main THICK QD bracket to your sway bar using the 2 supplied 7/16 x 1.25" Bolts, 4 - 7/16" SAE washers, and 2 - 7/16" metal locking nuts The bracket will mount on the inside of the sway bar, with the 90 degree bend at the front of the sway bar facing the inside. Follow illustration located on page 2.

4. Using the 7/16 x 1" bolt and the threaded QD pin, install the pin with the tapered end pointing towards the rear axle. We suggest using two drops of blue loctite on the female threads here.

5. Next you will need some lubrication and a few tools. First make sure the vehicle is still on level ground. Next, use hammer and 3/8" deep well socket to remove the metal sleeve from the driver side sway bar link that mounts to the coin of the sway bar. With the passenger side sway bar end link mounted with hardware tightened, test fit the driver side sway bar end link bracket. We recommend you use some lubrication to allow the new quick detach pin to slide in easily through the now sleeveless poly bushing. If you experience some resistance or misalignment in the sway bar end link lining up with the quick detach pin, be sure to loosen the jam nut in the middle of the sway bar end link and shorten or extend the threaded end link until the sway bar end fits easily over the QD pin. Then be sure to re-tighten the jam nut.

6. Now that the sway bar end link is adjusted to its proper length, it is time to assemble the Park mount bracket and install it on the Bronco frame. First, mount the second QD pin to the THIN bracket like you did the THICK one but do not add blue loctite yet. Then Insert the QD pin into the bottom of the end link and swing the bracket/end link to the rear of the Bronco so that the end link is level against the frame and the THIN QD bracket is perpendicular with the sway bar end link as shown in on page 2.

7. Outline the perimeter of the QD bracket against the frame. Remove the sway bar end link, uninstall the QD pin, and place the bracket back against the frame inside the outline you drew. Secure the bracket using the supplied Two - 1/4" Self Tapping Screws and two - 1/4" SAE washers. **NOTE: In some cases you may need to use the provided plastic spacer to mount the THIN QD park bracket on the frame if it wants to mount on the edge of the bump stop mount plate.**

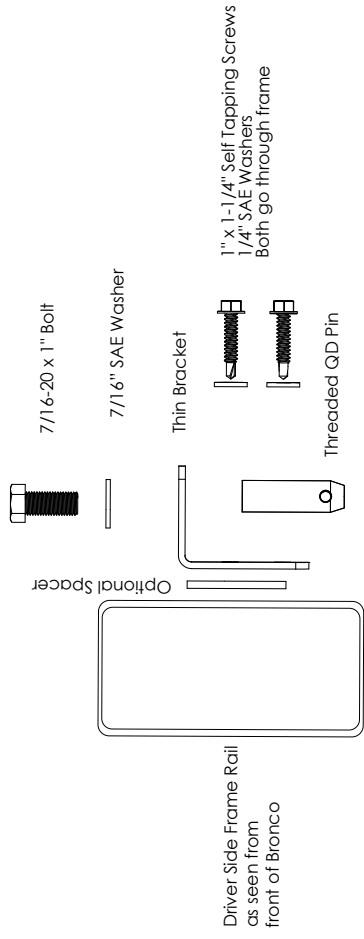
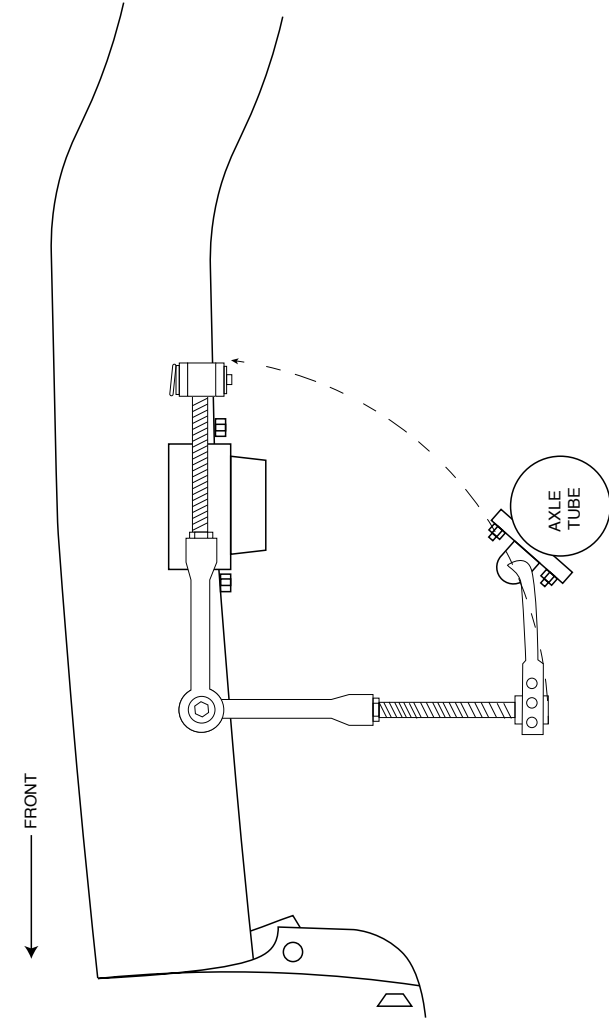
8. Reinstall the Park Mount QD pin and tighten. We suggest using 2 drops of Blue Loctite here.

9. Finally, Slide the sway bar end link over the QD pin attached to the coin of the sway bar, and secure it using the provided Lynch Pin.

LIMITED WARRANTY

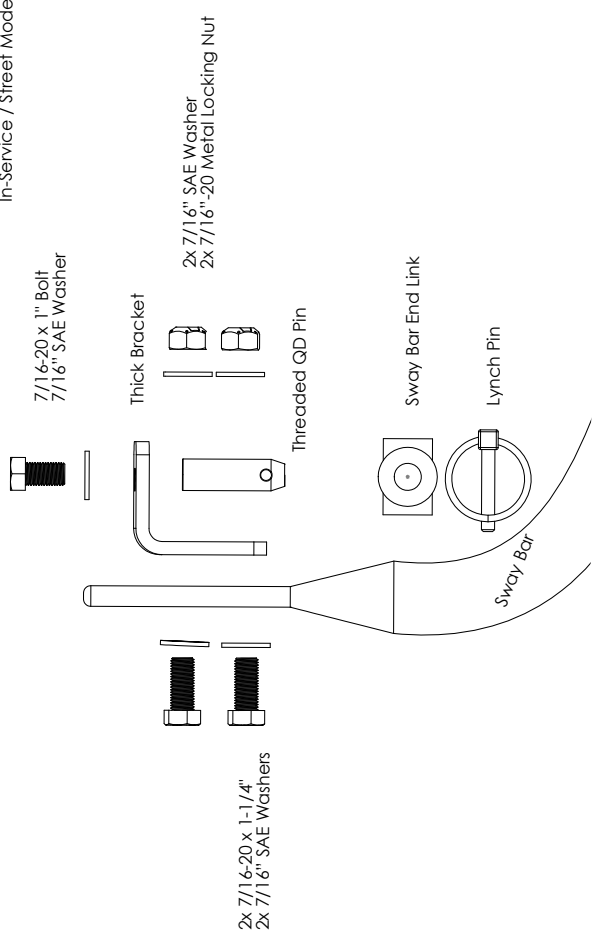
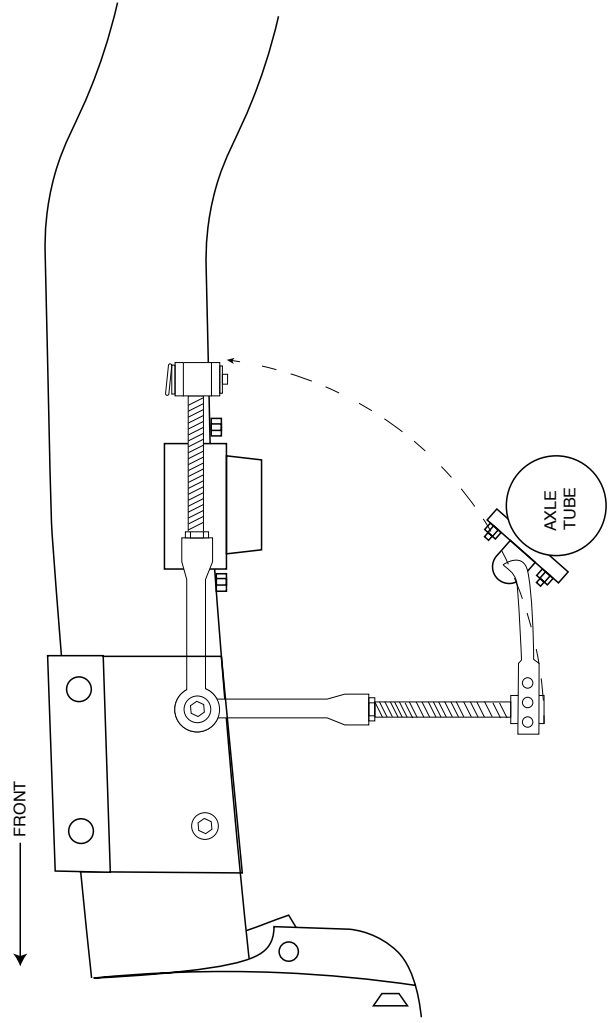
James Duff Inc. warrants our products to the original purchaser to be free from defects in materials and workmanship. Warranty periods begin at the date of purchase and varies by product. Shocks have a limited lifetime warranty. Headers, Radiators and Suspension Products, Power Brake Boosters and Master Cylinders have a one year warranty. Adapters and soft goods such as upholstery, vinyl and rubber products have a 90 day warranty. All warranties are to the original purchaser with proof of purchase only. Such obligations under this warranty shall be limited to the repair or replacement, at JDI's discretion, of any assembly or part which upon examination by JDI proves to be defective. Any costs of removal, installation, re-installation or freight charges are expressly excluded from this warranty. This warranty covers only manufacturers defects, and does not cover product finish or damage resulting from abuse, misuse, negligence, racing, alteration, accident or damage in transit. All returns must be pre-authorized by JDI and accompanied with a Return Goods Authorization Number (RGA) and a dated proof of purchase. Returns must be made within 90 days of purchase, packaged sufficiently to prevent damage in shipment and sent prepaid to JDI, 6609 Bronco Lane, Knoxville, TN 37921 Returns without an RGA# will be refused. This warranty is expressly in lieu of all other warranties, expressed or implied, including the implied warranties of merchantability and fitness for use. This warranty gives you specific legal rights including other rights that vary from state to state. Some states do not allow limitations on how long an implied warranty lasts, or do not allow the exclusion of limitation of incidental or consequential damages, so the above limitations and/or exclusions may not apply to you.

Figure A
Rev. A Style Rear Sway Bar - No Shock Mount



Disconnected / Trail Mode

Figure B
Rev. B Style Rear Sway Bar w/ Duff Shock Mount



In-Service / Street Mode