

INSTALLATION INSTRUCTIONS: 564x

Heim Steering Hardware

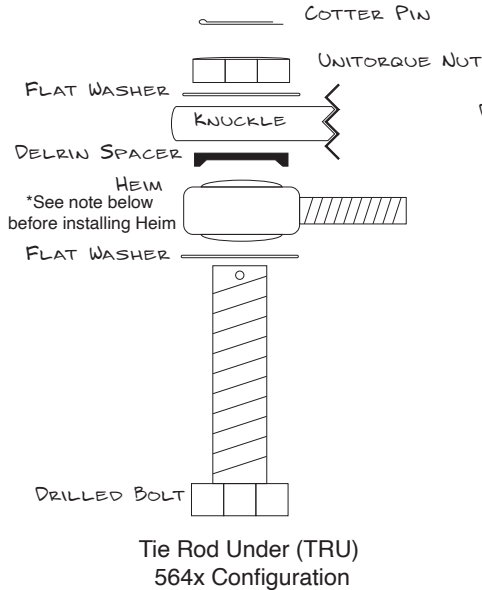
CONTENTS:

- 2 Cotter Pins
- 2 3/4" Unitorque Nuts
- 4 3/4" Flat Washers
- 2 Anti-Wobble Delrin Spacers
- 2 3/4" Drilled Plated Bolts - 282 ft. lbs.

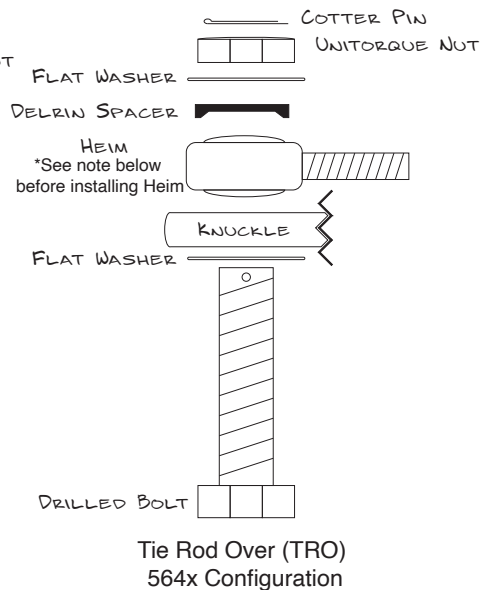
NOTE: If you cannot reach the specified torque setting, get the nut as tight as possible and stop before damaging the edges of the nut/bolt where the wrench makes contact. Always recheck hardware after driving Bronco off road and the first 100 miles. Then at every oil change. Mark the nuts with a paint pen to track any movement for a quick visual reference.



865.938.6696 www.dufftuff.com
6609 Bronco Ln.
Knoxville, TN 37921
06/23



Tie Rod Under (TRU)
564x Configuration



Tie Rod Over (TRO)
564x Configuration

*Note: Delrin spacers can bind the heim steering and make it touchy on the road, if the tops of the knuckles are not flat and the heim stud hole is not 100% perpendicular with the knuckle mounting face.

There is a short side and long side of the heim joint. The short side has a red teflon spacer between the body of the heim and the spherical ball. Install the short side against the delrin spacer. In some cases the heim may be too tight against the delrin spacer. If you cannot move the heim freely when installed flip the heim over and re-install.

INSTALLATION INSTRUCTIONS: 564x

Heim Steering Hardware

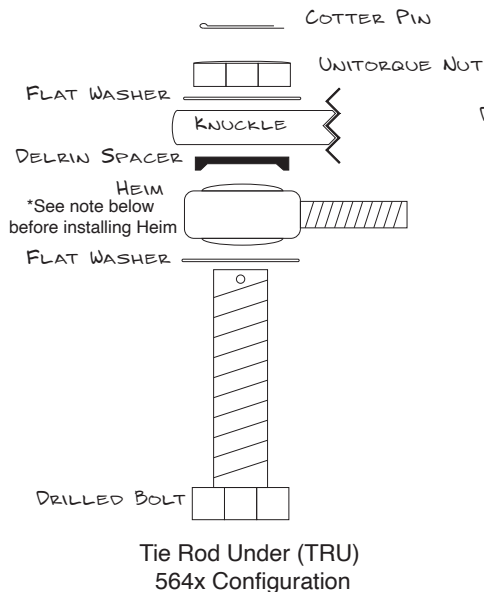
CONTENTS:

- 2 Cotter Pins
- 2 3/4" Unitorque Nuts
- 4 3/4" Flat Washers
- 2 Anti-Wobble Delrin Spacers
- 2 3/4" Drilled Plated Bolts - 282 ft. lbs.

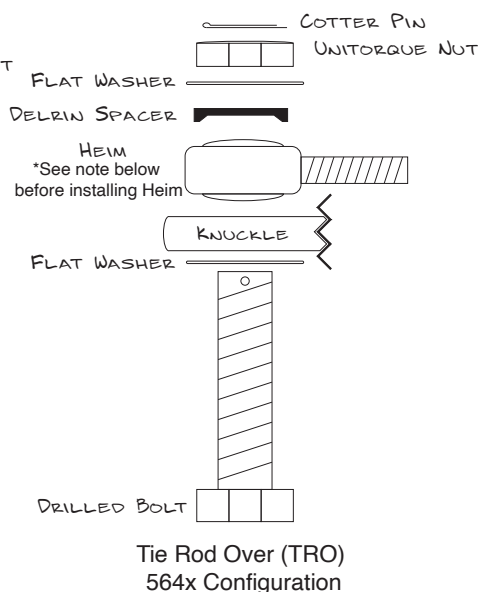
NOTE: If you cannot reach the specified torque setting, get the nut as tight as possible and stop before damaging the edges of the nut/bolt where the wrench makes contact. Always recheck hardware after driving Bronco off road and the first 100 miles. Then at every oil change. Mark the nuts with a paint pen to track any movement for a quick visual reference.



865.938.6696 www.dufftuff.com
6609 Bronco Ln.
Knoxville, TN 37921
06/23



Tie Rod Under (TRU)
564x Configuration



Tie Rod Over (TRO)
564x Configuration

*Note: Delrin spacers can bind the heim steering and make it touchy on the road, if the tops of the knuckles are not flat and the heim stud hole is not 100% perpendicular with the knuckle mounting face.

There is a short side and long side of the heim joint. The short side has a red teflon spacer between the body of the heim and the spherical ball. Install the short side against the delrin spacer. In some cases the heim may be too tight against the delrin spacer. If you cannot move the heim freely when installed flip the heim over and re-install.