

**INSTALLATION INSTRUCTIONS:
66-77 Bronco Aluminum Radiators**



865.938.6696 www.jamesduff.com
3231 NW Park Dr.
Knoxville, TN 37921

PART# 3110, 3112

CONTENTS:

- 1 Aluminum Radiator
- 2 Lower radiator mounting brackets, with Polyurethane insulators
- 2 Upper radiator mounting brackets, with Polyurethane insulators
- 2 5/16" x 3/4" NC GR 5 bolts
- 2 5/16" NC Nyloc nuts

1/1 11/06

Please read all instructions before beginning.

1. Drain coolant from current radiator. Disconnect anything attached to the radiator such as a fan shroud, radiator hoses, transmission cooling lines, transmission auxiliary cooler or electric fan.
2. Remove upper radiator mounting brackets, the radiator and the lower mounting brackets.
3. Install new lower radiator mounting brackets by inserting the stud in each of the lower brackets into the corresponding hole in the stock mount. Secure each bracket with a 5/16" Nyloc nut.
4. Place the radiator into the mounts so that the square locating mounts on the radiator sit in the groove of each lower insulator bushing (the blue bushings inside the mounting brackets). Make sure that the inlet and outlets on the radiator face the engine and that the filler neck is positioned on the upper passenger side.
5. Place an upper radiator mounting bracket over the radiator so that the square locating mounts on the radiator are positioned in the groove in the insulator bushings. The tab with the nut on it should be positioned so that it aligns with the stock upper mounting bracket hole. Secure each of these positions with a 5/16" x 3/4" bolt.
6. Connect all hoses, fan shroud, cooling lines, etc. that were disconnected in step 1. Note that the transmission cooler ports are 1/4" NPT thread for optimum flow capacity. Depending on the size of your lines it may be necessary to get an adapter to mate the transmission lines to the radiator. If the vehicle is equipped with a manual transmission and these ports won't be used, we highly suggest plugs be inserted in each port to keep the internal cooler clean.
7. Fill the radiator with a coolant/water mix. Run the engine until it is "warm" and the thermostat opens. Keep an eye on the coolant level and keep it full. Once it appears that the coolant level does not drop install the radiator cap. Hint: you may find it easier to get air out of your cooling system by slightly jacking up the front end. This will tilt the vehicle slightly, forcing the air to rise to the high spot (the radiator cap.) We recommend using a radiator cap that relieves pressure at 16 pounds. An overflow catch can (also called a surge tank) is highly recommended.

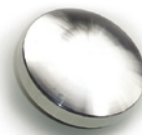


Actual size

NOTE: Make sure there is at least 1" of clearance between the radiator and the engine fan or severe damage to the radiator could occur. For optimum performance a fan shroud is necessary.

**Billet Aluminum
Radiator Cap**

Give your new aluminum radiator a finishing touch with this billet cap. An 16lb. pressure cap is siliconed inside the finished billet cap, thus allowing you to replace the pressure cap if necessary. **#3113**



LIMITED WARRANTY

James Duff Inc. warrants our products to the original purchaser to be free from defects in materials and workmanship. Warranty periods begin at the date of purchase and varies by product. Shocks have a limited lifetime warranty. Headers, Radiators and Suspension Products have a one year warranty. Power Brake Boosters and Master Cylinders have a three year warranty. Adapters and soft goods such as Canvas tops, upholstery, vinyl and rubber products have a 90 day warranty. All warranties are to the original purchaser with proof of purchase only. Such obligations under this warranty shall be limited to the repair or replacement, at JDI's discretion, of any assembly or part which upon examination by JDI proves to be defective. Any costs of removal, installation, reinstallation or freight charges are expressly excluded from this warranty. This warranty covers only manufacturers defects, and does not cover product finish or damage resulting from abuse, misuse, negligence, racing, alteration, accident or damage in transit.

All returns must be pre-authorized by JDEI and accompanied with a Return Goods Authorization Number (RGA) and a dated proof of purchase. Returns must be made within 90 days of purchase, shipped prepaid, packaged in original cartons to prevent damage in shipment and sent to JDI, 3231 NW Park Dr., Knoxville, TN 37921 Returns without an RGA# will be refused.

This warranty is expressly in lieu of all other warranties, expressed or implied, including the implied warranties of merchantability and fitness for use. This warranty gives you specific legal rights including other rights that vary from state to state. Some states do not allow limitations on how long an implied warranty lasts, or do not allow the exclusion of limitation of incidental or consequential damages, so the above limitations and/or exclusions may not apply to you.